

Item	Category	Function	Wafer Size	Make	Model	S/N	Vintage	Location	Q'ty
1	Metrology(Bright Field Inspection)	Bright Field Inspection	300mm	AMAT	Uvision 200		2006	Taiwan	1
2	Wafer Cleaner	Wafer Cleaner	300mm	Hugle	UPC-12100	CH07060	2006~2008	Taiwan	1
3	Metrology	Paticle Counter	300mm	Raytex	RXW-1226SFI		2006~2008	Taiwan	1
4	Metrology	X-ray Diffractometers	300mm	Revera	RVX5000		2006~2008	Taiwan	1
5	Canon Stepper FEOL	Wafer loader/unloader	300mm	Yaskawa	XU-F3000-CN04			Taiwan	1
6	Metrology	Paticle Measurement	300mm	SII NANO	XV 300DB	VG00030	2006~2008	Taiwan	1

Location	OEM (Mfg)	Model	Description	Condition	Remark
FAB A	SEN	NV-GSDIII-90	High current IMPLA	parts missing	Shanghai
EPZ A	NISSEN	Exceed2000	Medium Current IMP		Taiwan
FAB A	CANON	ASH210	Asher	Good, installed	Taiwan
FAB A	CANON	MAS-8220	Asher	Good, installed	Taiwan
EPZ A	HITACHI	M-602	Metal Etcher	Good	Taiwan
EPZ A	DNS	FL-820L	Pre-treatment	unknown	Taiwan
EPZ A	DNS	WS-820C	Nitride Strip		Taiwan
EPZ A	Vector	MX-100XT	Probe Station	Good	Taiwan
EPZ A	DNS	FL-820L	Pre-treatment	unknown	Taiwan
EPZ A	DNS	WS-820C	Oxide Etch		Taiwan
EPZ A	Nihon Freezer CO	EP-520	Freezer €701.00	unknown	Taiwan
EPZ A	SUMITOMO	KC-200A09	Carrier Washer	Good	Taiwan
EPZ A	RORZE	03RR8120-001-001	Wafer exchanger	unknown	Taiwan
EPZ A	RORZE	03RR8120-002-001	Wafer exchanger	unknown	Taiwan
EPZ A	NEC	DF-496	Wafer exchanger	Good	Taiwan
FAB A	YUASA	SR-8040A	In-Line Developer	unknown	Taiwan
FAB A	YUASA	SR-8040A	Inline Developer	unknown	Taiwan
EPZ A	ULTRACISION	890e	Probe Station.	Good	Taiwan

No.	Category	Maker	Model	Location
1	Metrology	KLA	eS32	Taiwan
2	Metrology	KLA	ES32	Taiwan
3	Metrology	KLA	ES32	Taiwan
4	Metrology	Negevtech	NT3100	Taiwan
5	Metrology	Accretech	Win-Win 50 1600	Taiwan
6	Metrology	Negevtech	NT3100	Taiwan
7	Metrology	Accretech	Win-Win 50 1600	Taiwan
8	Metrology	ACCRETECH	Tiger/ww50 1600	Taiwan
9	Metrology	Rudolph	WV320	Taiwan
10	Metrology	Rudolph	WV320	Taiwan
11	Metrology	Rudolph	WV320	Taiwan
12	Metrology	Rudolph	WV320	Taiwan
13	Metrology	Rudolph	WV320	Taiwan
14	Metrology	Rudolph	WV320	Taiwan
15	Metrology	Rudolph	WV320	Taiwan
16	Metrology	Rudolph	WV320	Taiwan
17	Metrology	Rudolph	WV320	Taiwan
18	Metrology	Accretech	Win-Win 50 1600	Taiwan
19	Etch	CI Science	TORUS300K	Taiwan
20	Etch	CI	Torus 300K	Taiwan
21	Etch	CI	Torus 300K	Taiwan
22	Etch	CI	Torus 300K	Taiwan
23	Etch	CI	Torus 300K	Taiwan
24	Etch	CI	Torus 300K	Taiwan
25	Etch	CI	Torus 300K	Taiwan
26	Etch	CI	Torus 300K	Taiwan
27	Metrology	JEOL	JEM-2500SE	Taiwan
28	Metrology	Rudolph	WV320	Taiwan
29	Metrology	JEOL	JEM-2500SE	Taiwan
30	ATE	Advantest	T5771	Taiwan
31	Metrology	RION	KS-40AF	Taiwan

No.	Maker	Modle
1	Kashiyama	SDE120
2	Kashiyama	SDE120
3	Kashiyama	SDE90
4	Kashiyama	SDE90
V	Kashiyama	SDE90
6	Kashiyama	SDE90
7	Kashiyama	SDE90
8	Kashiyama	SDE90
9	Kashiyama	SDE90
10	Kashiyama	SDE90
11	Kashiyama	SDE90
12	Kashiyama	SDE90
13	Kashiyama	SDE90
14	Kashiyama	SDE90
15	Kashiyama	SDE90
16	Kashiyama	SDE90
17	Kashiyama	SDE90
18	Kashiyama	SDE90
19	Kashiyama	SDE90
20	Kashiyama	SDE90
21	Kashiyama	SDE90
22	Kashiyama	SDE90
23	Kashiyama	SDE90
24	Kashiyama	SDE90
25	Kashiyama	SDE1203B
26	Kashiyama	SDE1203B
27	Kashiyama	SDE1203B
28	Kashiyama	SDE90
29	Kashiyama	SDE90
30	Kashiyama	SDE90
31	Kashiyama	SDE1203B
32	Kashiyama	SDE1203B
33	Kashiyama	SDE1203B
34	Kashiyama	SDE1203B
35	Kashiyama	SDE1203B
36	Kashiyama	SDE1203B
37	Kashiyama	SDE1203B
38	Kashiyama	SDE1203B
39	Kashiyama	SDE1203BH
40	Kashiyama	SDE1203B
41	Kashiyama	SDE1203BH
42	Kashiyama	SDE1203BL
43	Kashiyama	SDE1203B
44	Kashiyama	SDE1203BH
45	Kashiyama	SDE1203BH
46	Kashiyama	SDE1203B
47	Kashiyama	SDE1203B

48	Kashiyama	SDE1203B
49	Kashiyama	SDE1203B
50	Kashiyama	SDE1203BL
51	Kashiyama	SDE1203BL
52	Kashiyama	SDE1203B
53	Kashiyama	SDE1203BH
54	Kashiyama	SDE1203BH
55	Kashiyama	SDE1203B
56	Kashiyama	SDE1203BH
57	Kashiyama	SDE1203BH
58	Kashiyama	SDE1203B
59	Kashiyama	SDE1203B
60	Kashiyama	SDE1203BL
61	Kashiyama	SDE1203BH
62	Kashiyama	SDE1203BH
63	Kashiyama	SDE1203BH
64	Kashiyama	SDE603AH
65	Kashiyama	SDE603AH
66	Kashiyama	SDE603AH
67	Kashiyama	SDE2003B
68	Kashiyama	SDE2003B
69	Kashiyama	SDE2003B
70	Kashiyama	SDE2003B
71	Kashiyama	SDE2003B
72	Kashiyama	SDE2003B
73	Kashiyama	SDE1203BH
74	Kashiyama	SDE1203BH
75	Kashiyama	SDE1203BL
76	Kashiyama	SDE603A
77	Kashiyama	SDE603AL
78	Kashiyama	SDE603AL
79	Kashiyama	SDE1203B
80	Kashiyama	SDE1203B
81	Kashiyama	SDE1203BH
82	Kashiyama	SDE1203B
83	Kashiyama	SDE1203BH
84	Kashiyama	SDE603AH
85	Kashiyama	SDE1203BH
86	Kashiyama	SDE603A
87	Kashiyama	SDE603AL
88	Kashiyama	SDE1203B
89	Kashiyama	SDE1203BH
90	Kashiyama	SDE1203BL
91	Kashiyama	SDE603A
92	Kashiyama	SDE603AH
93	Kashiyama	SDE603AL
94	Kashiyama	SDE603AH
95	Kashiyama	SDE603AH
96	Kashiyama	SDE603AH
97	Kashiyama	SDE1203BH
98	Kashiyama	SDE603A

99	Kashiyama	SDE603AH
100	Kashiyama	SDE603A
101	Kashiyama	SDE603A
102	Kashiyama	SDE603AH
103	Kashiyama	SDE1203BL
104	Kashiyama	SDE2003B
105	Kashiyama	SDE2003BH
106	Kashiyama	SDE2003B
107	Kashiyama	SDE2003B
108	Kashiyama	SDE2003B
109	Kashiyama	SDE2003B
110	Kashiyama	SDE2003B
111	Kashiyama	SDE2003B
112	Kashiyama	SDE2003B
113	Kashiyama	SDE2003B
114	Kashiyama	SDE2003BH
115	Kashiyama	SDE2003B
116	Kashiyama	SDE2003B
117	EBARA	EST100WN
118	EBARA	EST100WN
119	EBARA	EST100WNHT
120	EBARA	EST100WN
121	EBARA	EST100WN
122	EBARA	EST100WN
123	EBARA	EST100WN
124	EBARA	EST100WN
125	EBARA	EST100WN
126	EBARA	EST100WN
127	EBARA	EST100WN
128	EBARA	EST100WN
129	EBARA	EST100WNHT
130	EBARA	EST100WNHT
131	EBARA	EST300WN
132	EBARA	EST300WN
133	EBARA	EST300WN
134	EBARA	EST300WN
135	EBARA	EST300WN
136	EBARA	EST300WN
137	EBARA	EST300WN
138	EBARA	EST300WN
139	EBARA	EST300WN
140	EBARA	EST300WN
141	EBARA	EST300WN
142	EBARA	EST300WN
143	EBARA	EST300WN
144	EBARA	EST300WN
145	EBARA	EST300WN
146	EBARA	EST300WN
147	EBARA	EST300WN
148	EBARA	EST300WN
149	EBARA	EST300WN

150	EBARA	EST300WN
151	EBARA	EST300WN
152	EBARA	EST100WN
153	EBARA	EST100WN
154	EBARA	EST100WN
155	EBARA	EST100WN
156	EBARA	EST100WN
157	EBARA	EST100WN
158	EBARA	EST100WN
159	EBARA	EST100WN
160	EBARA	EST100WN
161	EBARA	EST100WN
162	EBARA	EST100WN
163	EBARA	EST100WN
164	EBARA	EST100WN
165	EBARA	EST100WN
166	EBARA	EST100WN
167	EBARA	EST100WN
168	EBARA	EST100WN
169	EBARA	EST100WN
170	EBARA	EST100WN
171	EBARA	EST100WN
172	EBARA	EST100WN
173	EBARA	EST100WN
174	EBARA	EST100WN
175	EBARA	EST100WN
176	EBARA	EST100WN
177	EBARA	EST100WN
178	EBARA	EST100WN
179	EBARA	EST100WN
180	EBARA	EST100WN
181	EBARA	EST100WN
182	EBARA	EST100WN
183	EBARA	EST100WN
184	EBARA	EST100WN
185	EBARA	EST100WN
186	EBARA	EST100WN
187	EBARA	EST100WN
188	EBARA	EST100WN
189	EBARA	EST100WN
190	EBARA	EST100WN
191	EBARA	EST100WN
192	EBARA	EST100WN
193	EBARA	EST200WN
194	EBARA	EST200WN
195	EBARA	EST201WNXHT
196	EBARA	EST200WN
197	EBARA	EST200WN
198	EBARA	EST200WN
199	EBARA	EST200WN
200	EBARA	EST200WN

201	EBARA	EST200WN
202	EBARA	EST200WN
203	EBARA	EST200WN
204	EBARA	EST200WN
205	BOC Edwards	HMB1800
206	EBARA	EST200WN
207	EBARA	EST200WN
208	EBARA	EST200WN
209	EBARA	EST200WN
210	EBARA	EST200WN
211	EBARA	EST200WN
212	EBARA	EST200WN
213	EBARA	EST200WN
214	EBARA	EST200WN
215	EBARA	EST200WN
216	EBARA	EST200WN
217	EBARA	EST200WN
218	EBARA	EST200WN
219	EBARA	EST200WN
220	EBARA	EST200WN

PUMP	VIH1800
PUMP	VIH1800
PUMP	VIH1800
PUMP	VIH1800
PUMP	VIH1800
PUMP	VIH1800
PUMP	VIH1000
PUMP	VIH1000
PUMP	VIH1000
PUMP	VIH1000
PUMP	VIH1000
PUMP	VIH1000
PUMP	VIH1000
PUMP	VIH1000
PUMP	VIH1000
PUMP	VIH1000
PUMP	VIH1000
PUMP	VSDE1203BG
PUMP	VA100
PUMP	VA100
PUMP	VA100
PUMP	VA100
PUMP	VA100
PUMP	VA100
PUMP	VA100
PUMP	VA100
PUMP	VA100
PUMP	VA100
PUMP	VA100
PUMP	VA100
PUMP	VA100
PUMP	VT100L
PUMP	VT100L
PUMP	VT100L
PUMP	VT100L
PUMP	VT100L
PUMP	VT100L
PUMP	VT100L
PUMP	VT100L
PUMP	VIH1000
PUMP	VIH1000
PUMP	VA100
PUMP	VA100
PUMP	VA100
PUMP	VT100L
PUMP	VIH600

PUMP	VIH600
PUMP	VIH600
PUMP	VIH600
PUMP	VIH600
PUMP	VIH600
PUMP	VIH600
PUMP	VIH600
PUMP	VIH600
PUMP	VIH600
PUMP	VIH600
PUMP	VIH600
PUMP	VIH600
PUMP	VIH1000SC
PUMP	VIH1000
PUMP	VIH1000
Chiller	VFSTC-HS308H
Chiller	VFSTC-HS308H
Chiller	VFSTC-HS308H
Chiller	VFSTC-HS308H
Chiller	VFSTC-HS308H
PUMP	VAAS20N
PUMP	VAAS200WN
PUMP	VAAS200WN
PUMP	VAAS200WN
PUMP	VAAS200WN
PUMP	VAAS200WN
PUMP	VAAS200WN
PUMP	VAA30N
PUMP	VIH600
PUMP	VAAS20N
PUMP	VSDE603AHT2
Chiller	VSTHEAD0
PUMP	VAAS200WN
PUMP	VCSW-61C--X
PUMP	VSDE603AHT2
PUMP	VSDE603AHT2
PUMP	VSDE1203TZHT
PUMP	VSDE1203TZHT
PUMP	VSDE603AHT2
PUMP	VA100
PUMP	VA100
PUMP	VA100
PUMP	VSDE603AHT2
PUMP	VA100
PUMP	VESR80WN
PUMP	VESR80WN

列標籤	計數 - Q'ty
M6242	1
M6243	2
M6300	10
M6541A	6
M6541AD	48
M6542AD	52
M6721A	2
M6741A	16
M6751A	19
M6751AD	11
M6761	2
M6771AD	9
M7211	1
M7721A	1
T2000	16
T2K ISS	6
T5335P	7
T5336	1
T5365	2
T5371	19
T5372	32
T5375	32
T5376	3
T5377	36
T5377S	3
T5383	4
T5385	1
T5501	1
T5501S	1
T5571P	7
T5581H	51
T5581P	2
T5585	38
T5585	1
T5586	12
T5588	11
T5592	1
T5593	73
T5773	1
T5832ES	1
T5833	1
T6371(ND1)	5
T6372(ND2)	5

T6372L (ND2L)	5
T6672	2
T6673	1
總計	561



K-SHINE ELECTRONIC CORP

泛泰科技股份有限公司

SEMICONDUCTOR PARTNER

COPYRIGHT © 2021 K-SHINE ELECTRONIC CORP.

Company Profile



- **Founded** in 2006
- **Chairman** :
Andy Chen
- **Capital** :
NT\$: 275,000,000
- **Headquarters** :
12F, No285, Sec2, GungFu Road, East Dist.,
HsinChu City 300, Taiwan, ROC
- **Contact** :
TEL : +886-3-516-3236
FAX : +886-3-516-3237
- **Website** :
www.k-shine.com.tw

About Us:

We are a company specializing in semiconductor equipment leasing and international trade.

The main business includes equipment and spare parts trading and maintenance, equipment agency, etc.

Service

Systems & Parts Service

Systems Service

- Tester Platform : Advantest ; Teradyne ; Credence
- Prober : TEL ; TSK
- Handler : Advantest

Parts Design / Refurbish / Maintenance

- Long Board
- Probe Card
- Burn In Board
- Hi-Fix
- Change Kits
- Socket



Service

Equipment Trading & Leasing – Leasing Model

Pure Operating Lease

- Pure operating lease for certain period
- Lease payment on Annual / quarterly / monthly based
- Easy for Configuration upgrade during the leasing period, customers may choose the option when the end of lease
- More flexible on production / financial control for lessee.
- Adopted customers such as MosChip...

Operating Lease with Single Payment at Day 1

- Saving interest by single payment at day 1
- Adopted customers such as ASE-KH...

Revenue Share

- Lower cost in off-season
- Using equipment in lower risk
- Adopted customers such as SJ Semi, SMIC...

Service

Equipment Trading & Leasing – Tool Types

Front-End Tool

- **NIKON** KrF Stepper, DUV scanner, Remote Controller
- **ASM** Main Tool
- **CANON** RTA-Thermal Annealing
- **KLA** Sheet Resistance Measurement, Thickness Measurement
- **HITACHI** Scanning electron microscope
- **DNS** Wafer Scrubber
- **LEICA** Review Station

Back-End Tool

- **Advantest** Tester, Handler
- **Teradyne** Tester
- **Disco** Dicing Saw, Laser Saw, Grinder, Polisher
- **TEL** Prober
- **TSK** Prober

Service

Agent

Equipment Agent

- Wet Etch
- AOI
- Vacuum Plasma
- Burn In Oven
- Robot of Loader
- Robot of Unloader
- Others



Our Capability

MX-Signal

802.11a/b/g/baseband up to 10bit 40Mbps ADC/DAC
BLE 2.4 GHz RF transceiver, modem, baseband and 32-bit processor.

Device Characterization

PVT, process/design improvement, Failure Analysis

High Speed

USB 2.0/3.0 (480M/5G)
SATA-1/2/3 (1.5G/3.0G/6G)
PCIE 1/2/3 (2.5/5.0/8 GTs)
HDMI 1.4/2.0 (8.16/14.4Gbps) DDR4/DDR5 (3.2 / 4.8Gbps)

Fine-pitch Interface

<60u pitch VPC
0.3mm WLCSP Ball pitch LB

Power IC

100MHz -3dB closed- loop signal bandwidth
PSRR/CMRR/MTPR

Strengths of K-Shine

2. Fluent Asset Tool – Major Back-end Testing Tools

Memor



T5588



T5503



T5377S



Magnum 2x

Digital Mixed



Ultra Fle



V93000



ETS-800



T2000

PMIC



ETS-364



ETS-800



T2000 IP
S

CIS



IP750/IP750EX



T2000 IS
S

RF



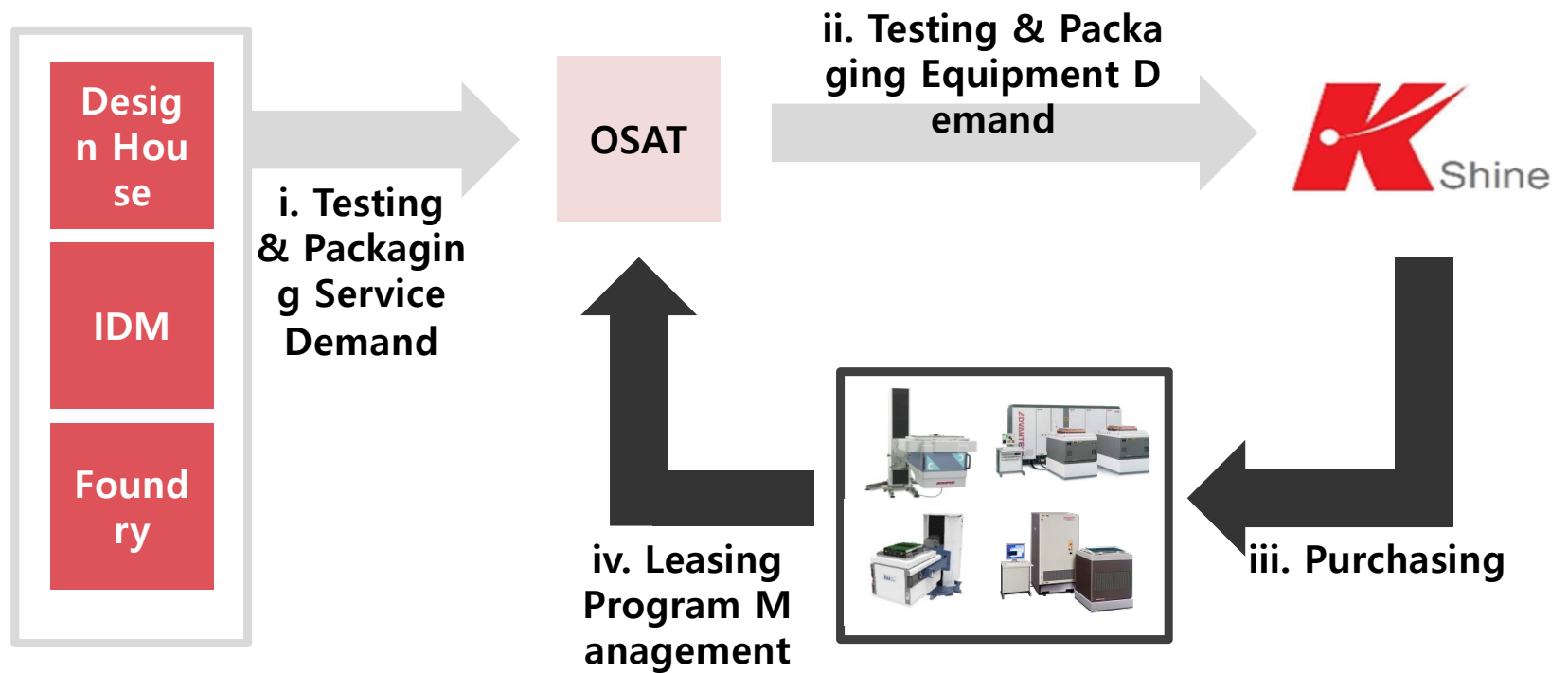
Ultra Flex
RF



T2000 R
F

Strengths of K-Shine

3. Well organized Leasing program



Strengths of K-Shine

5. Best solution of Used tool - Back-end Used Tool Sales Flow





THANK YOU



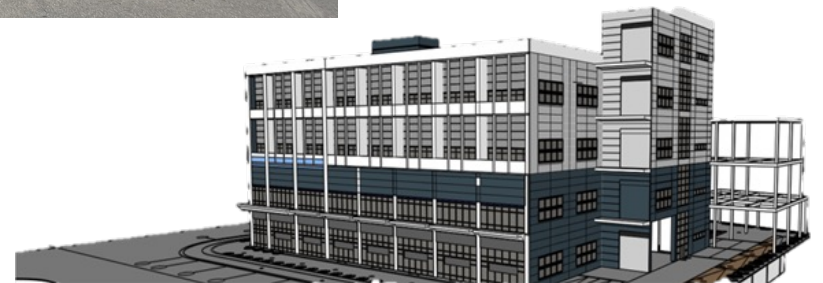
Marushow Group



-丸正グループ会社案内-



2023.7.18



-丸正グループは-

Marushow Group

台湾 ⇔ 日本の架け橋

丸正グループは液晶、半導体のエンドユーザー・製造メーカーに商品を提供している。品質第一を基本に、独自の生産管理体制にて”必要な物を必要な時に”弊社のグループで何でも対応できるような会社を目標している。

日本高精度な製品を独自なルートで入手し、台湾エンドユーザーに販売したり、日本へはコストパフォーマンスの高い商品を逆輸入したりしている。**両国がお互い不足分を補える関係で双方の利益を最大に引き出すことができる。**

半導体・液晶に使用する設備をはじめ、部品製造、アフターサービス応援、人材派遣、再生、特殊洗浄、リペアなどあらゆる製品に対応できる。弊社グループの企業が持つ優勢を最大に利用でき、材料、加工、洗浄まで一連の生産工程をグループ内で行える。

技術力

- ◆ 純正メーカーが認定した技術を持つ
- ◆ TSMCが認定した技術を持つ
- ◆ 最先端技術を研究開発の能力を持つ

品質

- 業界最厳条件で検査
- 検査に必要な検査装置を所有
- 受入れから出荷まではシステム化

人脈

- ✓ 業界30年の人脈
- ✓ 業界NO.人脈の広さ
- ✓ 前工程・後工程に強いパイプを持つ

対応力

- 効率的なコミュニケーション
- 通常対応はもちろん、クレーム対応に素早い対応力
- 客先のニーズを瞬時にキャッチ

Marushow Group

Marushow Group

中古設備販売事業



全工程中古設備

設立日：2007

紹介：P5



後工程中古設備

設立日：1999

紹介：P6

製造・再生事業



金属加工

設立日：2018

紹介：P7



ケーブル制作

設立日：2002

紹介：P8-9



洗浄&アルマイト

設立日：1997

紹介：P10-11

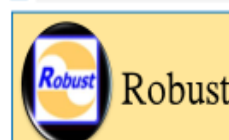


溶射&洗浄

設立日：1997年

紹介：P12

修理・再生事業



ロボット
製造&修理

設立日：2004

紹介：P13



screen洗浄設備
Chuck修理

設立日：2011

紹介：P14



静電チャック
製造&修理

設立日：2015

紹介：P15



ドライポンプ
修理

設立日：2001

紹介：P16

装置改善事業

World
Made

装置改善
(ハード)

設立日：2013

紹介：P17

Thinotech

装置改善
(ソフト)

設立日：2021

紹介：P18-19